

PARA USO EN AVIACIÓN VIRTUAL ÚNICAMENTE

JEPPESEN

APR 10-92 (13-1)

RIBERALTA, BOLIVIA

RIBERALTA

**CAT A
B & C VOR NDB-1 Rwy 31**

VOR 113.7 RBT

NDB *370 REA

Apt. Elev 462'

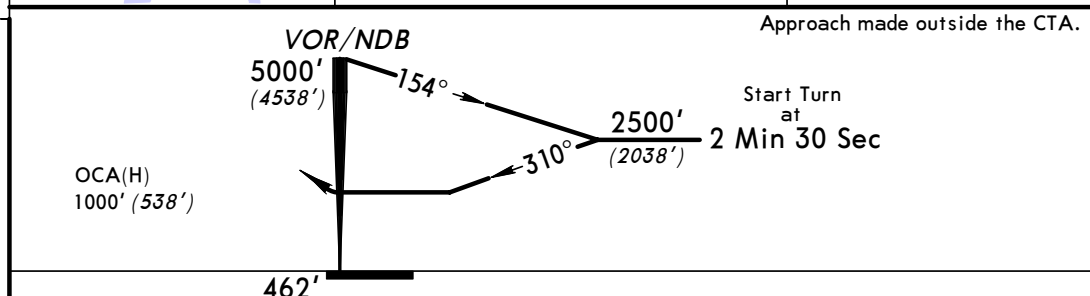
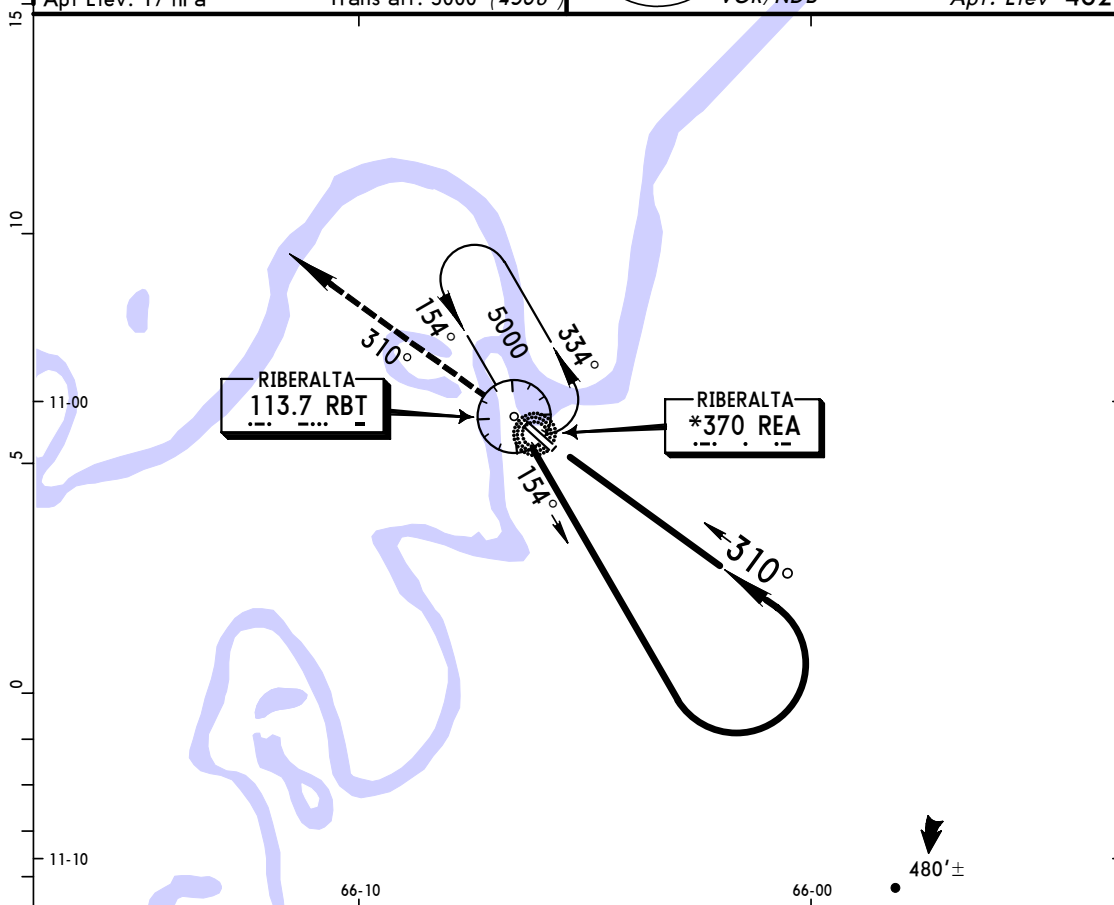
*RIBERALTA Tower 118.1

Alt Set: hPa
Apt Elev: 17 hPa

Trans level: By ATC
Trans alt: 5000' (4538')

5000'

MSA
VOR/NDB



MISSED APPROACH: Climb on outbound RBT VOR R-310/310° bearing from REA NDB to 3000' and request instructions from Tower.

STRAIGHT-IN LANDING RWY31										CIRCLE-TO-LAND																
MDA(H) 1000' (538')					DAY					DAY					NIGHT											
DAY					NIGHT					Max Kts					MDA(H)											
A		1.6 km					NA					100					1000' (538') - 2.4 km					NA				
B		2.4 km										135														
C												180					1100' (638') - 3.6 km									
D		NA										D		NA												
MAP at VOR/NDB																										

CHANGES: Procedure.

© JEPPESEN SANDERSON, INC., 1985, 1992. ALL RIGHTS RESERVED.

PARA USO EN AVIACIÓN VIRTUAL ÚNICAMENTE

JEPPESSEN

APR 10-92 (13-2)

RIBERALTA, BOLIVIA

RIBERALTA

CAT A
B & C **VOR NDB-1 Rwy 13**

VOR 113.7 RBT

NDB *370 REA

Apt. Elev 462'

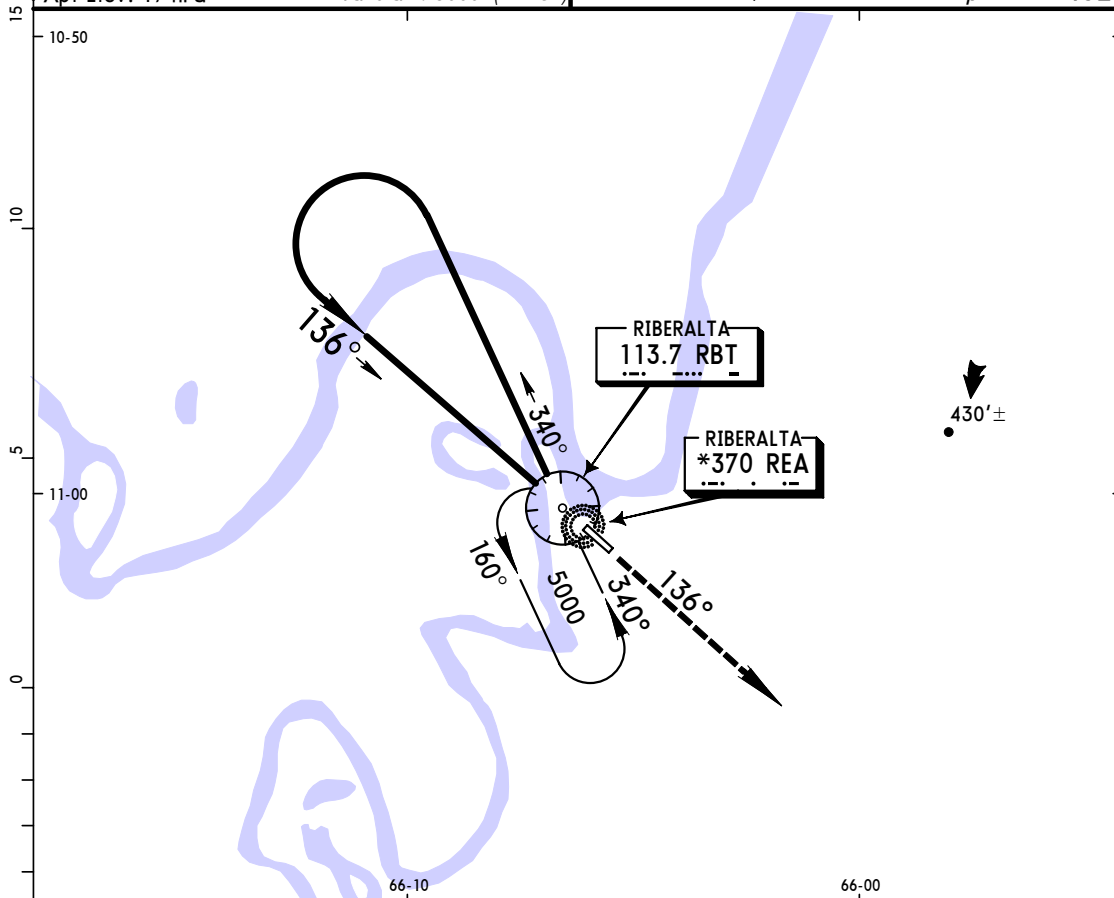
*RIBERALTA Tower 118.1

Alt Set: hPa
Apt Elev: 17 hPa

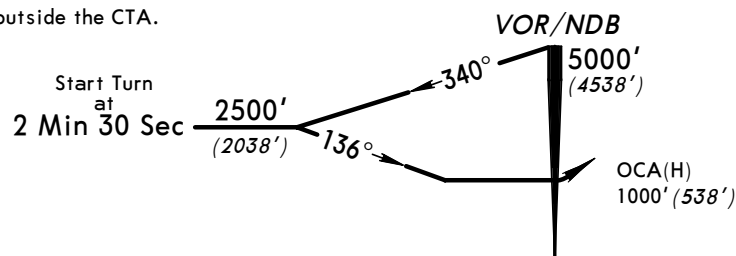
Trans level: By ATC
Trans alt: 5000' (4538')

5000'

MSA
VOR/NDB



Approach made outside the CTA.



MISSED APPROACH: Climb on outbound RBT VOR R-136/136° bearing from REA NDB to 3000' and request instructions from Tower.

STRAIGHT-IN LANDING RWY13										CIRCLE-TO-LAND									
MDA(H) 1000' (538')																			
DAY								NIGHT											

CHANGES: Procedure.

© JEPPESEN SANDERSON, INC., 1985, 1992. ALL RIGHTS RESERVED.

PARA USO EN AVIACIÓN VIRTUAL ÚNICAMENTE

RIBERALTA, BOLIVIA

SLRI

(13-1)

APR 10-92

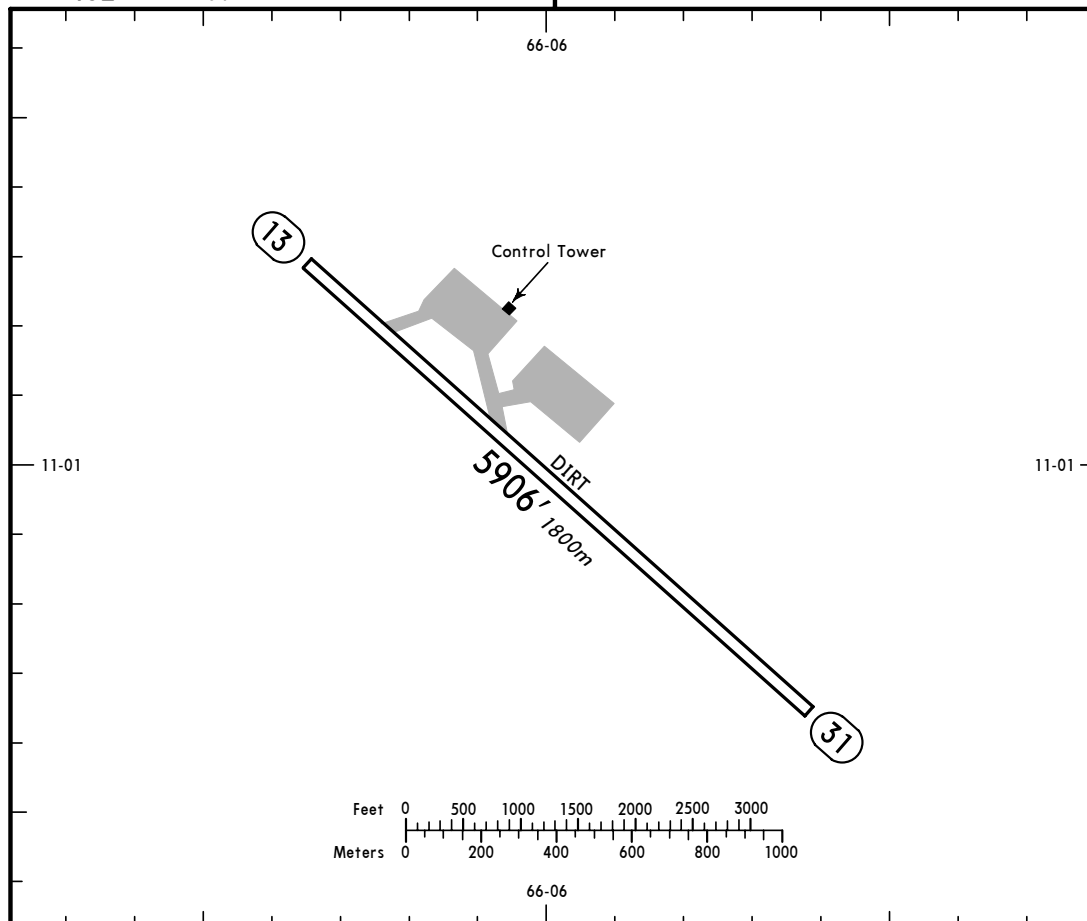
JEPPesen

RIBERALTA

S11 01.0 W066 06.0

Elev 462' Var 04°W

*RIBERALTA Tower 118.1



ADDITIONAL RUNWAY INFORMATION

RWY		USABLE LENGTHS		TAKE-OFF	WIDTH
		LANDING BEYOND Threshold	Glide Slope		
13					98'
	31				30m

TAKE-OFF			FOR FILING AS ALTERNATE	
	AIR CARRIER All Rwys	GENERAL AVIATION All Rwys	DAY	NIGHT
1 & 2 Eng	1.6 km	165m- 2.4 km	A B C D	310m -4.4 km NA
3 & 4 Eng	0.8 km	NOT APPLICABLE		NOT APPLICABLE

CHANGES: Minimums.

© JEPPESEN SANDERSON, INC., 1985, 1992. ALL RIGHTS RESERVED.